

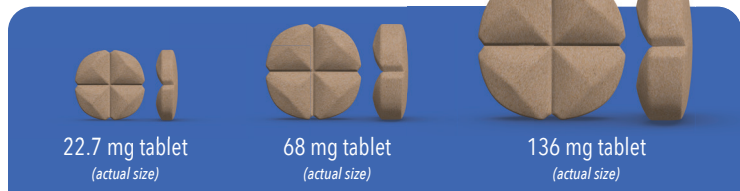
▼ FOLD HERE ▼

Enroflox[®] (enrofloxacin) Chewable Tablets Once-Daily Dosing



5 mg/kg* dose for dogs and cats

Do not exceed 5 mg/kg of body weight per day in cats



WEIGHT	22.7 MG TABLET	68 MG TABLET	136 MG TABLET
5 lb (2.27 kg)	½		
10 lb (4.54 kg)	1		
15 lb (6.80 kg)	1½	or ½	
30 lb (13.61 kg)		1	
45 lb (20.41 kg)		1½	
60 lb (27.22 kg)			1
90 lb (40.82 kg)			1½
120 lb (54.43 kg)			2

*Dosing range for dogs is 5–20 mg/kg.

CAUTION: Federal (U.S.A.) law restricts this drug to use by or on the order of a licensed veterinarian. In rare instances, use of this product in cats has been associated with retinal toxicity. Do not exceed 2.27 mg/lb of body weight per day in cats. Observe label directions and see product labeling for full product information.

© 2022. All rights reserved. The Norbrook logos and Enroflox are registered trademarks of Norbrook Laboratories Limited.