

LIVER FLUKE RAPID ANTIBODY TEST for CATTLE

For use by Vets, Farmers and Livestock Handlers

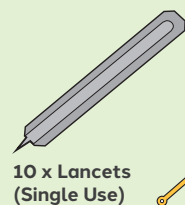


SCAN THE QR CODE TO WATCH THIS 2 MINUTE HOW TO USE VIDEO BEFORE FIRST USE

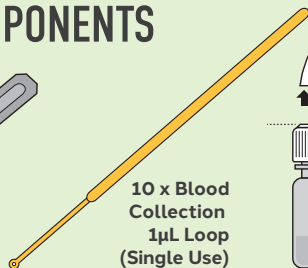


Or go to www.norbrook.com/products/liver-fluke-rapid-antibody-test/

KIT COMPONENTS



10 x Lancets (Single Use)



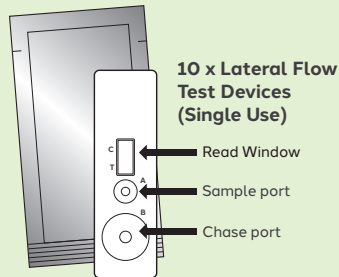
10 x Blood Collection 1µL Loop (Single Use)



10 x (White Cap) Sample Buffer Bottles (Single Use)

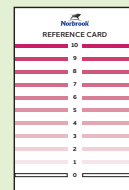


1 x (Black Cap) Chase Buffer Bottle (NOTE: 1 bottle to be used for ALL 10 tests)



10 x Lateral Flow Test Devices (Single Use)

Read Window
Sample port
Chase port



1 x Visual Reference Card (to be used for ALL 10 tests)

- Each test is a single use test. Dispose after use. Each lateral flow device can only be used once.
- Use within one hour of opening.
- Do not use after the expiry date.
- Store at room temperature (15° - 25°C).
- The test is designed for use with blood, but can be used with plasma or serum.

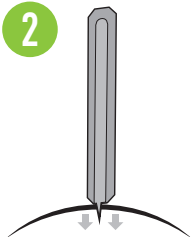
SPECIMEN COLLECTION AND HANDLING

! Ensure to keep the lateral flow devices at the recommended storage temperatures prior to use, as cold conditions may impact device performance.

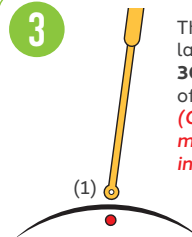


Blood can be collected from the top of the nose (or the ear if necessary). If sampling from the nose, a dosing yolk to help restrain the animal's head is recommended.

Dry the top of the nose with a clean tissue, just where the hair meets the skin of the nose.



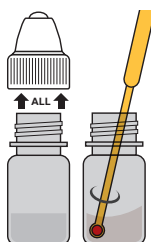
Take lancet from the kit, and remove outer packaging. Use the pointed end of the lancet to pierce the skin using a swift motion at right angles to the skin. The lancet can be used again **only on the same animal** if there was insufficient blood from the first attempt.



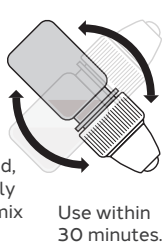
Then withdraw the lancet and wait up to **30 seconds** for a drop of blood to appear (1). **(Once used, lancets must be disposed of in a sharps bin).**

Gently collect blood sample to fill the collection loop (2).

4 Remove the whole sample buffer bottle lid (white), insert blood collection sample and swirl.

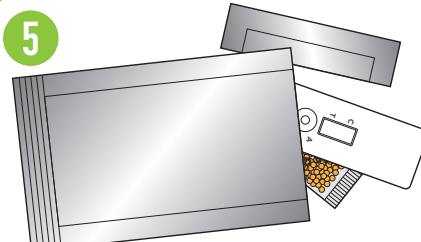


Replace lid, then gently invert to mix 10 times.

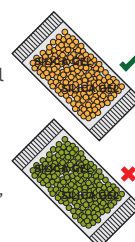


Use within 30 minutes.

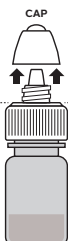
5



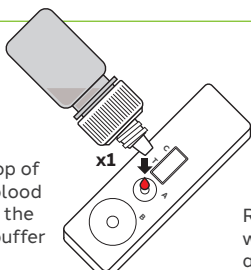
Remove the lateral flow device from the foil pouch and ensure that the desiccant sachet is orange. (If green, discard and use new device).



6 Remove just the white cap.



Add 1 drop of sample blood buffer to the sample buffer port (A).



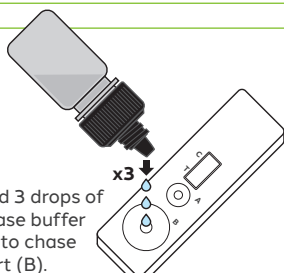
Replace white cap and close.



7 Within 0-2 minutes, remove just the black cap from the chase buffer bottle.



Add 3 drops of chase buffer on to chase port (B).



Replace black cap and wait 10 minutes before reading the test result.

INTERPRETATION OF TEST RESULTS

After 10 minutes evaluate the lateral flow device for the formation of a control line (C). If there is no visible control line the test is invalid.

If a control line (C) is visible, use the reference card to match up the colour of the **test line (T)** and assign a score to the test line. If there is no visible (T) line after 10 minutes, the animal has tested negative. If there any visible (T) line results, discuss with your vet.

Test score indications: 0 = Negative 1 = Inconclusive 2-10 = Positive

